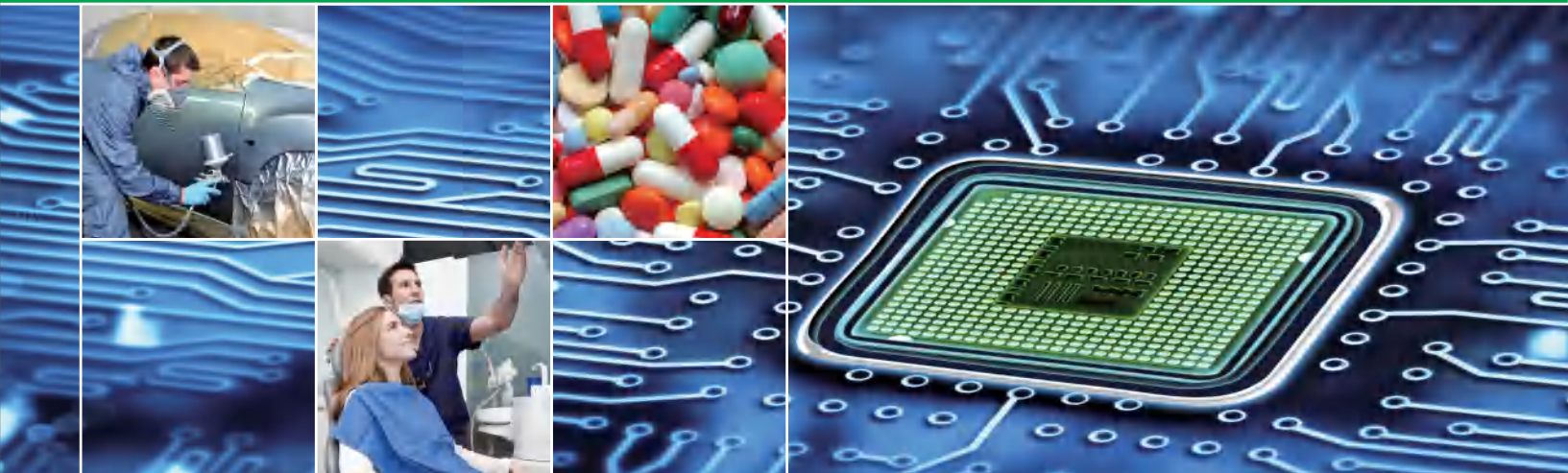


# Oil Free Air Compressors

Installed motor power from 2.2 to 500 kW/3 to 670 hp  
Free air delivery from 0.21 to 86.01 m<sup>3</sup>/min,  
Pressure from 2.5 to 10.0 bar



## CONTENTS

- 01 OIL FREE SCROLL AIR COMPRESSOR
- 02 DRY TYPE OIL FREE SCREW AIR COMPRESSOR

P01  
P03



# OIL FREE SCROLL AIR COMPRESSOR

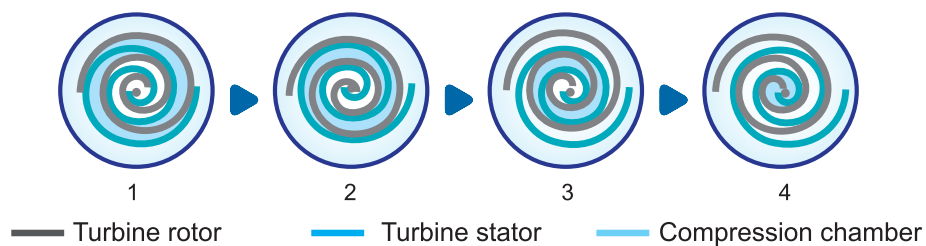
## Features and advantages

Mute, clean, energy saving and efficient.  
100% oil free (class 0).  
Delivers 11-15% more air compared to similar designs with no additional power.  
Better in durability and longevity.



## Working principle

The turbine rotor turns in sequence of Picture 1→2→3→4, air is sucked into the space between turbine stator and turbine rotor, the volume of crescent-shaped (in point symmetry) compression chamber gradually decreases, compressed air is discharged through air outlet of central portion.



# Technical parameters

Type	Maximum working pressure		Capacity FAD*				Installed motor power		No. of air end	Air outlet pipe diameter	Noise Level**	Dimensions(mm)			Weight
			50 Hz		60 Hz							L	W	H	
	bar(g)	psig	m³/min	cfm	m³/min	cfm	kW	hp	Unit	inch	[dB(A)]				kg
DWW-2	7.0	102	0.248	9	0.248	9	2.2	3	1	Rc1/2	65	775	500	838	155
	8.0	116	0.246	9	0.246	9	2.2	3		Rc1/2	65	775	500	838	155
	10.0	145	0.208	7	0.208	7	2.2	3		Rc1/2	65	775	500	838	155
DWW-3	7.0	102	0.421	15	0.421	15	3.7	5	1	Rc1/2	65	775	500	838	175
	8.0	116	0.415	15	0.415	15	3.7	5		Rc1/2	65	775	500	838	175
	10.0	145	0.305	13	0.305	13	3.7	5		Rc1/2	65	775	500	838	175
DWW-5	7.0	102	0.598	21	0.598	21	5.5	7	1	Rc1/2	68	890	600	930	200
	8.0	116	0.596	21	0.596	21	5.5	7		Rc1/2	68	890	600	930	200
	10.0	145	0.518	18	0.518	18	5.5	7		Rc1/2	68	890	600	930	200
DWW-7	7.0	102	0.846	30	0.846	30	7.5	10	2	Rc3/4"	72	1100	800	1100	360
	8.0	116	0.842	30	0.842	30	7.5	10		Rc3/4"	72	1100	800	1100	360
	10.0	145	0.726	26	0.726	26	7.5	10		Rc3/4"	72	1100	800	1100	360
DWW-11	7.0	102	1.197	42	1.197	42	11	15	2	Rc3/4	72	1100	800	1100	390
	8.0	116	1.193	42	1.193	42	11	15		Rc3/4	72	1100	800	1100	390
	10.0	145	1.036	37	1.036	37	11	15		Rc3/4	72	1100	800	1100	390
DWW-16	7.0	102	1.795	63	1.795	63	16.5	22	3	Rc1-1/2"	76	1250	900	1700	680
	8.0	116	1.789	63	1.789	63	16.5	22		Rc1-1/2"	76	1250	900	1700	680
	10.0	145	1.554	55	1.554	55	16.5	22		Rc1-1/2"	76	1250	900	1700	680
DWW-18	7.0	102	2.043	72	2.043	72	18.5	25	4	Rc1-1/2"	76	1250	900	1920	735
	8.0	116	2.035	72	2.035	72	18.5	25		Rc1-1/2"	76	1250	900	1920	735
	10.0	145	1.762	62	1.762	62	18.5	25		Rc1-1/2"	76	1250	900	1920	735
DWW-22	7.0	102	2.393	85	2.393	85	22	30	4	Rc1-1/2"	76	1250	900	1920	910
	8.0	116	2.385	84	2.385	84	22	30		Rc1-1/2"	76	1250	900	1920	910
	10.0	145	2.071	73	2.071	73	22	30		Rc1-1/2"	76	1250	900	1920	910
DWW-27	7.0	102	2.991	106	2.991	106	27.5	37	5	Rc1-1/2"	80	2000	1236	1665	1230
	8.0	116	2.982	105	2.982	105	27.5	37		Rc1-1/2"	80	2000	1236	1665	1230
	10.0	145	2.589	91	2.589	91	27.5	37		Rc1-1/2"	80	2000	1236	1665	1230
DWW-33	7.0	102	3.590	127	3.590	127	33	45	6	Rc1-1/2"	80	2000	1236	1665	1315
	8.0	116	3.578	126	3.578	126	33	45		Rc1-1/2"	80	2000	1236	1665	1315
	10.0	145	3.107	110	3.107	110	33	45		Rc1-1/2"	80	2000	1236	1665	1315
DWW-38	7.0	102	4.188	148	4.188	148	38.5	50	7	Rc1-1/2"	80	2000	1236	2165	1520
	8.0	116	4.174	147	4.174	147	38.5	50		Rc1-1/2"	80	2000	1236	2165	1520
	10.0	145	3.625	128	3.625	128	38.5	50		Rc1-1/2"	80	2000	1236	2165	1520
DWW-44	7.0	102	4.786	169	4.786	169	44	60	8	Rc1-1/2"	80	2000	1236	2165	1620
	8.0	116	4.771	168	4.771	168	44	60		Rc1-1/2"	80	2000	1236	2165	1620
	10.0	145	4.143	146	4.143	146	44	60		Rc1-1/2"	80	2000	1236	2165	1620

\*) FAD in accordance with ISO 1217 : 2009, Annex C: Absolute intake pressure 1 bar (a), cooling and air intake temperature 20 °C

\*\*) Noise level as per ISO 2151 and the basic standard ISO 9614-2, operation at maximum operating pressure and maximum speed; tolerance: ± 3 dB(A)

Specifications are subject to change without notice.

# DRY TYPE OIL FREE SCREW AIR COMPRESSOR

## Features and advantages



01

### State-of-the-art Screw Element

- Original Germany GHH air end
- Double stage compression
- Superior Sweden SKF element bearings



02

### Advanced Touch Screen Controller and Monitoring System

- Overall system performance status with pro-active service indications, alarms for malfunctions and safety shutdowns
- All monitoring and control functions via one interface, multi-language LCD available.
- Wide communication possibilities



03

### Electrical Components

Schneider electrical elements with original package from France, safe and reliable.



04

### Stainless Steel Oil Pipe and Air Pipe

- High temperature resistant (400°C=752°F) and low temperature resistant(- 270°C= - 518°F), high pressure resistant
- Ultra-long life (80 years), completely leak free and maintenance free



05

### Superior Air Filter

- Superior air filter with two-stage dust removal and filtering system with efficiency of up to 99.9% even in heavy-duty environments
- Extends the service life of the compressor parts and components, ensures high air quality



06

### Premium Efficiency Drive Motor

- Premium efficiency Totally Enclosed Fan Cooled (TEFC) IP54/IP55 motor (Class F insulation) protects against dust and chemicals etc.
- Long-term stable operation even in harsh environments up to 55 C (131 F)

## Technical parameters for 7.0-10.0 bar models

Model	Maximum working pressure		Capacity FAD*				Installed motor power		Cooling Method	Noise level**	Dimensions(mm)			Weight	Air outlet pipe diameter
			50 Hz		60 Hz						L	W	H		
	bar(g)	psig	m³/min	cfm	m³/min	cfm	kW	hp						[dB(A)]	
DWW-45	7.0	102	7.70	272	7.16	253	45	60	Air Cooling W-Water Cooling	72	2500	1600	2080	1960	DN50
	8.0	116	6.73	238	6.48	229	45	60		72	2500	1600	2080	1960	DN50
	10.0	145	5.10	180	5.37	189	45	60		72	2500	1600	2080	1960	DN50
DWW-55	7.0	102	9.60	339	8.87	313	55	75		72	2500	1600	2080	2250	DN50
	8.0	116	8.94	316	8.25	291	55	75		72	2500	1600	2080	2250	DN50
	10.0	145	7.78	275	7.10	251	55	75		72	2500	1600	2080	2250	DN50
DWW-75	7.0	102	12.12	428	12.60	445	75	100		75	2500	1600	2080	2315	DN50
	8.0	116	12.10	428	12.34	436	75	100		75	2500	1600	2080	2315	DN50
	10.0	145	11.10	392	10.43	368	75	100		75	2500	1600	2080	2315	DN50
DWW-75W	7.0	102	12.12	428	12.60	445	75	100		75	2300	1600	1790	1750	DN50
	8.0	116	12.10	428	12.34	436	75	100		75	2300	1600	1790	1750	DN50
	10.0	145	11.10	392	10.43	368	75	100		75	2300	1600	1790	1750	DN50
DWW-90	7.0	102	13.13	464	14.62	516	90	120		75	2500	1600	2080	2350	DN50
	8.0	116	13.11	463	14.60	515	90	120		75	2500	1600	2080	2350	DN50
	10.0	145	13.00	459	12.86	454	90	120		75	2500	1600	2080	2350	DN50
DWW-90W	7.0	102	13.13	464	14.62	516	90	120	75	2300	1600	1790	1860	DN50	
	8.0	116	13.11	463	14.60	515	90	120	75	2300	1600	1790	1860	DN50	
	10.0	145	13.00	459	12.86	454	90	120	75	2300	1600	1790	1860	DN50	
DWW-110	7.0	102	19.50	689	17.50	618	110	150	77	2800	1800	1860	2675	DN65	
	8.0	116	18.31	647	17.47	617	110	150	77	2800	1800	1860	2675	DN65	
	10.0	145	16.00	565	15.41	544	110	150	77	2800	1800	1860	2675	DN65	
DWW-110W	7.0	102	19.50	689	17.50	618	110	150	77	2800	1800	1860	3235	DN65	
	8.0	116	18.31	647	17.47	617	110	150	77	2800	1800	1860	3235	DN65	
	10.0	145	16.00	565	15.41	544	110	150	77	2800	1800	1860	3235	DN65	
DWW-132	7.0	102	23.00	813	23.29	822	132	175	77	2800	1800	1860	2845	DN65	
	8.0	116	21.66	765	23.27	822	132	175	77	2800	1800	1860	2845	DN65	
	10.0	145	19.44	687	20.46	723	132	175	77	2800	1800	1860	2845	DN65	
DWW-132W	7.0	102	23.00	813	23.29	822	132	175	77	2800	1800	1860	3370	DN65	
	8.0	116	21.66	765	23.27	822	132	175	77	2800	1800	1860	3370	DN65	
	10.0	145	19.44	687	20.46	723	132	175	77	2800	1800	1860	3370	DN65	
DWW-160	7.0	102	26.30	929	27.28	963	160	215	77	2800	1800	1860	3370	DN65	
	8.0	116	26.23	927	27.26	962	160	215	77	2800	1800	1860	3370	DN65	
	10.0	145	23.00	813	26.38	931	160	215	77	2800	1800	1860	3370	DN65	
DWW-160W	7.0	102	26.30	929	27.28	963	160	215	77	2800	1800	1860	3755	DN65	
	8.0	116	26.23	927	27.26	962	160	215	77	2800	1800	1860	3755	DN65	
	10.0	145	23.00	813	26.38	931	160	215	77	2800	1800	1860	3755	DN65	

\*) FAD in accordance with ISO 1217:2009, Annex C: Absolute intake pressure 1 bar (a), cooling and air intake temperature 20 °C

\*\*) Noise level as per ISO 2151 and the basic standard ISO 9614-2, operation at maximum operating pressure and maximum speed; tolerance: ±3 dB(A)

\*\*\*) N/A-Not Available

\*\*\*\*) VSD models are also available

**Specifications are subject to change without notice.**

## Technical parameters for 7.0-10.0 bar models

Model	Maximum working pressure		Capacity FAD*				Installed motor power		Cooling Method	Noise level** [dB(A)]	Dimensions(mm)			Weight kg	Air outlet pipe diameter
			50 Hz		60 Hz						L	W	H		
	bar(g)	psig	m <sup>3</sup> /min	cfm	m <sup>3</sup> /min	cfm	kW	hp							
DWW-185	7.0	102	29.17	1031	31.20	1102	185	250	Air Cooling W-Water Cooling	77	2800	1800	1860	3345	DN65
	8.0	116	29.13	1029	31.04	1096	185	250		77	2800	1800	1860	3345	DN65
	10.0	145	26.23	927	29.16	1030	185	250		77	2800	1800	1860	3345	DN65
DWW-185W	7.0	102	29.17	1031	31.20	1102	185	250		77	2800	1800	1860	3370	DN65
	8.0	116	29.13	1029	31.04	1096	185	250		77	2800	1800	1860	3370	DN65
	10.0	145	26.23	927	29.16	1030	185	250		77	2800	1800	1860	3370	DN65
DWW-200W	7.0	102	35.00	1237	34.82	1229	200	270		79	3400	1900	2200	5320	DN100
	8.0	116	32.60	1152	34.78	1228	200	270		79	3400	1900	2200	5320	DN100
	10.0	145	29.05	1027	28.42	1004	200	270		79	3400	1900	2200	5320	DN100
DWW-220W	7.0	102	37.63	1330	37.35	1319	220	300		79	3400	1900	2200	5800	DN100
	8.0	116	35.10	1240	37.30	1317	220	300		79	3400	1900	2200	5800	DN100
	10.0	145	32.39	1145	31.30	1105	220	300		79	3400	1900	2200	5800	DN100
DWW-250W	7.0	102	45.20	1597	44.27	1563	250	350		79	3400	1900	2200	7335	DN100
	8.0	116	41.64	1472	44.24	1562	250	350		79	3400	1900	2200	7335	DN100
	10.0	145	37.32	1319	37.20	1314	250	350		79	3400	1900	2200	7335	DN100
DWW-280W	7.0	102	45.50	1608	47.25	1668	280	375	82	4400	2200	2200	7500	DN100	
	8.0	116	45.44	1606	47.21	1667	280	375	82	4400	2200	2200	7500	DN100	
	10.0	145	41.56	1469	41.23	1456	280	375	82	4400	2200	2200	7500	DN100	
DWW-315W	7.0	102	50.09	1770	52.30	1847	315	425	82	4400	2200	2200	7800	DN100	
	8.0	116	50.06	1769	52.27	1846	315	425	82	4400	2200	2200	7800	DN100	
	10.0	145	45.37	1603	46.60	1645	315	425	82	4400	2200	2200	7800	DN100	
DWW-355W	7.0	102	54.46	1923	56.84	2007	355	475	82	5000	2200	2500	9500	DN125	
	8.0	116	54.41	1921	56.74	2003	355	475	82	5000	2200	2500	9500	DN125	
	10.0	145	50.52	1784	50.32	1777	355	475	82	5000	2200	2500	9500	DN125	
DWW-400W	7.0	102	67.36	2378	69.55	2456	400	535	82	5000	2200	2500	9700	DN125	
	8.0	116	67.27	2375	69.45	2452	400	535	82	5000	2200	2500	9700	DN125	
	10.0	145	56.65	2000	56.55	1997	400	535	82	5000	2200	2500	9700	DN125	
DWW-450W	7.0	102	78.07	2757	81.66	2883	450	600	82	5000	2200	2500	9800	DN125	
	8.0	116	77.98	2753	N/A	N/A	450	600	82	5000	2200	2500	9800	DN125	
	10.0	145	67.10	2369	69.29	2447	450	600	82	5000	2200	2500	9800	DN125	
DWW-500W	7.0	102	86.01	3037	N/A	N/A	500	670	82	5000	2200	2500	10500	DN125	
	8.0	116	85.92	3034	81.58	2881	500	670	82	5000	2200	2500	10500	DN125	
	10.0	145	77.82	2748	N/A	N/A	500	670	82	5000	2200	2500	10500	DN125	

\*) FAD in accordance with ISO 1217:2009, Annex C: Absolute intake pressure 1 bar (a), cooling and air intake temperature 20 °C

\*\*) Noise level as per ISO 2151 and the basic standard ISO 9614-2, operation at maximum operating pressure and maximum speed; tolerance: ±3 dB(A)

\*\*\*) N/A-Not Available

\*\*\*\*) VSD models are also available

**Specifications are subject to change without notice.**

## Technical parameters for 2.5-3.0 bar models

Model	Maximum working pressure		Capacity FAD*				Installed motor power		Cooling Method	Noise level** [dB(A)]	Dimensions(mm)			Weight kg	Air outlet pipe diameter
			50 Hz		60 Hz						L	W	H		
	bar(g)	psig	m <sup>3</sup> /min	cfm	m <sup>3</sup> /min	cfm	kW	hp							
DWL-55-2	2.5	37	15.33	541	14.44	510	55	75	Air Cooling W-Water Cooling	66	2400	1800	1700	2630	DN80
DWL-55-3	3.0	44	12.78	451	10.85	383	55	75		66	2400	1800	1700	2630	DN80
DWL-75-2	2.5	37	19.92	703	20.35	719	75	100		66	2400	1800	1700	2850	DN80
DWL-75-3	3.0	44	16.30	576	15.87	560	75	100		66	2400	1800	1700	2850	DN80
DWL-90-2	2.5	37	26.07	921	26.45	934	90	120		69	2400	1800	1700	2850	DN80
DWL-90-3	3.0	44	19.54	690	19.49	688	90	120		69	2400	1800	1700	2850	DN80
DWL-110(W)-2	2.5	37	33.16	1171	29.90	1056	110	150		69	3000	2000	2000	3450	DN125
DWL-110(W)-3	3.0	44	25.60	904	23.92	845	110	150		69	2400	1800	1700	3450	DN80
DWL-132(W)-2	2.5	37	40.24	1421	40.98	1447	132	175		69	3000	2000	2000	3490	DN125
DWL-132(W)-3	3.0	44	27.23	961	29.43	1039	132	175		69	3000	2000	2000	3490	DN125
DWL-160(W)-2	2.5	37	49.42	1745	49.21	1738	160	215		73	3000	2000	2000	3540	DN125
DWL-160(W)-3	3.0	44	35.75	1262	34.98	1235	160	215		73	3000	2000	2000	3540	DN125
DWL-185(W)-2	2.5	37	55.18	1948	57.17	2019	185	250		76	3000	2000	2000	3640	DN125
DWL-185(W)-3	3.0	44	42.21	1490	44.16	1559	185	250		76	3000	2000	2000	3640	DN125

\*) FAD in accordance with ISO 1217:2009, Annex C: Absolute intake pressure 1 bar (a), cooling and air intake temperature 20 °C

\*\*) Noise level as per ISO 2151 and the basic standard ISO 9614-2, operation at maximum operating pressure and maximum speed; tolerance: ±3 dB(A)

\*\*\*\*) VSD models are also available

**Specifications are subject to change without notice.**



P-DNR202512-01 Note: Specifications are subject to change without prior notice  
Warning: Compressed air must not be used for breathing purposes without prior purification in accordance with local laws and standards



***Denair Energy Saving Technology (Shanghai) Plc.***

No. 6767, Tingfeng Rd., Jinshan District,  
Shanghai 201502, China  
Tel.: +86 21 5722 3896  
Fax: +86 21 6040 5929

**info@denair.net**  
**www.denair.net**